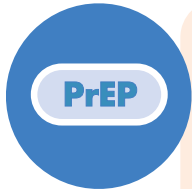


WHAT DOES PREP ACCESS THROUGH THE PHARMACEUTICAL BENEFITS SCHEME (PBS) MEAN?



WHAT IS PREP?

HIV Pre-Exposure Prophylaxis (PrEP) is the regular use of HIV medication by HIV negative people at risk of HIV to prevent HIV infection. PrEP is highly effective at preventing HIV infection.

IS PREP AVAILABLE THROUGH AUSTRALIA'S HEALTHCARE SYSTEM?

PrEP is subsidised by the Australian Government through the Pharmaceutical Benefits Scheme (PBS).



IS PREP AVAILABLE IN OTHER WAYS IN AUSTRALIA?

Yes. You can access PrEP through [personal importation](#). This is an option for people who are ineligible for Medicare and unable to access PrEP through the PBS.

The cost of personal importation per month is around the same as for a general patient PBS co-payment (approx. \$30 per month).

WILL MY DOCTOR BE ABLE TO PRESCRIBE PREP THROUGH THE PBS?

Any doctor or general practitioner (GP) can prescribe PrEP through the PBS to an Australian resident who holds a current Medicare card.

State and Territory-based AIDS Councils, People With HIV (PWHIV) organisations and other community organisations can assist you in finding inclusive and informed doctors who can discuss PrEP with you.



AM I ELIGIBLE FOR PREP?

Individuals disclosing certain sexual practices or drug use will be recommended for PrEP. These individuals will be required to undergo testing to confirm an HIV negative status and trigger the presence of rare health risks that could require ongoing monitoring.

If you are not using PrEP and you think you are at risk of HIV you should see your doctor or visit a sexual health clinic. Healthcare Professionals have comprehensive guidelines at their disposal to make decisions about prescribing PrEP.

WILL LOCAL PHARMACIES BE ABLE TO DISPENSE PREP?

Yes, all pharmacies will be able to dispense PrEP.



WHAT IS THE PBS CO-PAYMENT?

Individuals with a current Medicare card and a valid script from their doctor who purchase PrEP at a pharmacy will have to pay a PBS co-payment, as with all other medications on the PBS. Co-payments are financial contributions made by consumers towards the cost of dispensing medication.

The PBS classifies people into two categories for the purposes of co-payments: concessional patients or general patients. Concessional patients are individuals with a Health Care Card or Pensioner Concession Card. These people will pay a PBS co-payment of \$7.30 for 30-days' supply of PrEP. General patients will be charged \$30.00 for 30-days' supply.

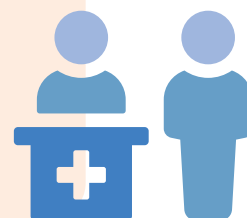


HOW MUCH PREP MEDICATION WILL BE PRESCRIBED AND SUPPLIED THROUGH THE PBS?

Doctors can prescribe up to three months' supply of PrEP at a time through the PBS. This is one script with two repeats.

HOW OFTEN DO I NEED TO VISIT MY DOCTOR FOR AN HIV AND STI TEST?

Individuals will need to see their doctor every three months to obtain another PrEP script. At this visit, your doctor will test you for HIV and other STIs.



FOR MORE INFORMATION ABOUT PREP AND ACCESS OPTIONS IN EACH STATE AND TERRITORY, PLEASE SEE THE FOLLOWING LINKS:

ACT	meridianact.org.au/prep
NSW	endinghiv.org.au/stay-safe/prep positivelife.org.au
NT	ntahc.org.au/prep
QLD	comeprepd.info qpp.org.au/prevention-transforming-hiv/prep
SA	samesh.org.au/prep.html
TAS	tascahrd.org.au
VIC	thorneharbour.org/hiv-aids/pre-exposure-prophylaxis-prep livingpositivevictoria.org.au
WA	waac.com.au/prep/
AFAO	afao.org.au/about-hiv/hiv-prevention/prep
ASHM	www.ashm.org.au/HIV/PrEP/

A link to the Register of public sexual health clinics in Australia can be found here:
raccp.edu.au/fellows/resources/sexual-health-medicine-resources

